

WORKTECH™

Sydney

WORK / WORKPLACE / TECHNOLOGY / INNOVATION

EXPLORE THE FUTURE OF WORK AND THE WORKPLACE

VENUE: ICC SYDNEY, DARLING HARBOUR

THURSDAY 24TH MARCH 2022

09:00 - 17:10

#WORKTECH22SYDNEY

Sponsored by



Supported by



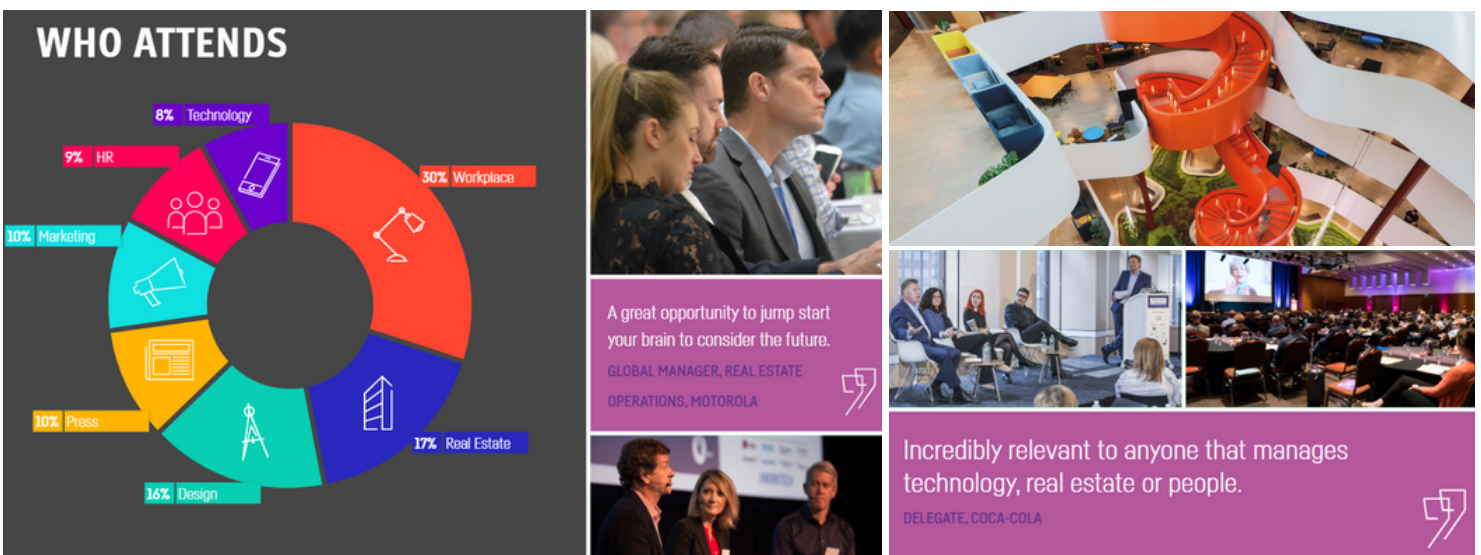


WORKTECH22 Sydney is the conference for all those involved in the future of work and the workplace as well as real estate, technology and innovation.

WORKTECH brings innovative ideas and inspiration to the workplace community through inter-disciplinary speakers and learning experience to enhance creativity and move thinking forward.

Join over 300 senior professionals from real estate, facilities, HR, technology, executive management, architecture, design and professional advisors to listen to global thought leaders, further their knowledge and share best practise and expertise.

After a hiatus in our programming, we are delighted to be getting back to real life conferences. Join us to hear from speakers with international reputations and network with peers in a way you haven't been able to for nearly 2 years. The conference agenda includes plenty of time to network and socialise and afternoon drinks. Given increased remote working over the last 18 months, this is a great opportunity to bring your team/colleagues together to socialise and learn for the day.



GET INVOLVED WITH WORKTECH23 SYDNEY

There are limited opportunities within the agenda for commercial partners to deliver relevant thought-leadership messages to our global audience of senior workplace professionals. Please contact partnerships@unwired.eu.com for more information on being involved

MEET THE SPEAKERS



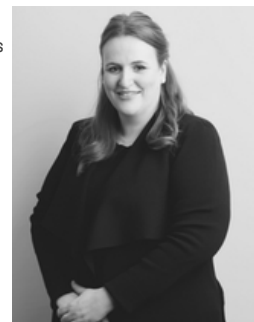
Gauri Bhalla
Faculty, The School of Life

**THE
SCHOOL
OF LIFE**



Philip Ross
Futurologist & CEO, Cordless Group & UNWORK

unwork



Caroline Boyce
Senior Workplace Strategy Consultant, Place Futures, Lendlease



Christhina Candido
Director, Faculty of Architecture, Building and Planning | Melbourne School of Design



Helen Palmer
Associate Director, Business Innovation and Ecosystems, NSW Treasury



Dr Kirsten Brown
Principal - Workplace Consulting, Six Ideas by Dexus



Geoff Sloan
Global Head of Corporate Real Estate, Macquarie



Dr. Christine Bruckner
Director, M Moser Associates



Rob Harris
Principal, Ramidus Consulting Limited



Paul Edwards
General Manager, Strategy & Customer, Mirvac



Rhona Duncanson
Senior ITS Workplace Portfolio Manager, KPMG



Ken Lynch
Head of Workplace, ANZ Bank



REGISTRATION & PRE-EVENT NETWORKING

#HYBRID #INNOVATIONDISTRICTS #FLEXIBLEBUILDINGS

09:00 AM - 09:15 AM

CHAIRPERSON'S WELCOME

Philip Ross, Futurologist & CEO, Cordless Group & UNWORK and Dr Kirsten Brown, Principal - Workplace Consulting, Six Ideas by Dexus

09:15 AM - 09:30 AM

WHAT'S HAPPENING WITH HYBRID? GLOBAL WORKPLACE TRENDS FOR THE NEW WORKPLACE

Philip Ross, Futurologist & CEO, Cordless Group & UNWORK

As more flexible work patterns, flexible organisations and flexible buildings emerge in the wake of the global pandemic, what are the key drivers of change in 2022? In this opening session, Philip, gives a big-picture view of corporate responses to the challenge of hybrid working from around the world.

09:35 AM - 10:00 AM

DO PLACES STILL HOLD ALL THE POWER? WHAT WE CAN LEARN FROM INNOVATION DISTRICTS TO CREATE NEW WORKPLACES OF THE FUTURE?

Caroline Boyce, Senior Workplace Strategy Consultant, Place Futures, Lendlease

Even with limited access to places – and workplaces – globally, innovation communities are thriving. Locally, “innovation” is a top concern of today’s business leaders. What might we stand to learn from innovation districts and how they have been operating, surviving, and even thriving at scale over the past few years, and what does this mean for our workplaces of the future?

10:05 AM - 10:35 AM

PLACES THAT CAN ACCELERATE BOTH POST-PANDEMIC RECOVERY AND NEW-ECONOMY INNOVATION

Natalie Slessor, Head of Customer, Digital & Place – Asset Management, Lendlease, Paul Hogan, Executive Director - Corporate Engagement, Macquarie University & Helen Palmer, Associate Director, Business Innovation and Ecosystems, NSW Treasury

How we all participate in the innovation economy may determine our success as businesses and as individuals in the coming decades. As leaders, how can we take steps to prepare people, businesses, and customers to flourish in the fourth industrial revolution?

10:35 AM - 11:05 AM

NETWORKING BREAK AND EXHIBITION

#HIGHPERFORMANCEWORKPLACES #NETZERODESIGN #REALESTATETRICS

11:05 AM - 11:30 AM

HIGH PERFORMANCE WORKPLACES

Christina Candido, Director, Faculty of Architecture, Building and Planning | Melbourne School of Design

This presentation show cases key design, performance, and experience-related findings from Australian, high-performance workplaces relevant including what changed from “nice to have” to “must have” post-covid.

11:30 AM - 11:55 AM

THE IMPORTANCE AND IMPACT OF NET ZERO DESIGN – METHODOLOGIES AND EXAMPLES FROM AROUND THE GLOBE

Dr. Christine Bruckner, Director, M Moser Associates

Many organisations around the globe are making net zero targets but how do we make it happen and what are the impacts on the workplace? Here we share examples and methodologies or how to achieve a net zero workplace and the impact on the environment, operations, and your people.

11:55 AM - 12:25 PM

FROM SPACE-CENTRIC TO HUMAN-CENTRIC: EXPLORING NEW VALUATION METRICS FOR THE NEW WORKPLACE

Rob Harris, Principal, Ramidus Consulting Limited, author London's Global Office Economy, From Clerical Factory to Digital Hub, Philip Ross, Futurologist & CEO, Cordless Group & UNWORK & Paul Edwards, General Manager, Strategy & Customer, Mirvac

This session will question whether existing metrics around renting out office space remain fit for purpose in the aftermath of the global pandemic. It will launch a new report that sets out the case for rethinking existing utilisation and valuation metrics in the context of the rise of hybrid and omni-channel working, which is catalysing the changing role of office space in an emerging landscape of choice and flexibility.

12:25 PM

HUB AUSTRALIA INNOVATION PLATFORM

Brad Krauskopf, CEO and Founder, HUB Australia

AGENDA

THURSDAY 24TH MARCH 2022

VENUE: ICC SYDNEY, DARLING HARBOUR

09:00 - 17:10

12:30 PM SKYFOLD INNOVATION PLATFORM

Ben Lornie, [Director at PTID](#)

12:35 PM IOFFICE + SPACEIQ INNOVATION PLATFORM

Joe Waller, [Enterprise Account Executive, iOFFICE + SpaceIQ](#)

12:40 PM - 1:40 PM LUNCH BREAK

#TECHNOLOGYINNOVATION #TRANSFORMATION #FLEXIBLESPACE

1:40 PM - 2:05 PM DIGITAL SAFARI

Philip Ross, [Futurologist & CEO, Cordless Group & UNWORK](#) & Varun Malkani, [Country Head Australia and Global Sales, Smarten Spaces](#)

Philip will introduce technology innovations and trends that he is seeing around the world in key workplaces. Varun and Philip will then discuss solutions that can make your workplace flexible, engaging, optimized and deliver the best employee experience.

2:05 PM - 2:30 PM HOW TO IMPROVE THE FLEXIBLE USE OF YOUR WORKSPACE – PRACTICAL TIPS FROM FRONTRUNNERS

Daniel Grilli, [General Manager Vecos Australasia](#)

Inspiring case studies on how smart technology in some of Australia's foremost smart buildings supports in realising successful flexible workplaces. Employees want to decide when, where and how they work. For organizations, a big opportunity has arisen to design the workplace more efficiently and improve the employee experience at the same time. You walk away with practical tips to apply immediately.

2:30 PM - 2:55 PM TRANSFORMING THE FUTURE OF WORK THROUGH CO-WORKING AND FLEXIBLE SPACES

Peter Halliday, [Senior Vice President, Siemens Smart Infrastructure](#)

Buildings are no longer passive assets. Instead, they are interfaces between people, processes and services within, and should be treated as active contributors in business success. Office buildings should function as a platform for innovation and experience by offering a smart environment and people-centric solutions.

2:55 PM - 3:20 PM TRAILBLAZING HYBRID WORKING TRANSFORMATION. LESSONS LEARNED FROM KPMG AND CRESTRON

Rhona Duncanson, [Senior ITS Workplace Portfolio Manager, KPMG](#) & Max Davies, [Director of Enterprise and UC, Crestron](#)

KPMG Australia was the first of the Big Four consultancy firms to make the bold leap to a software based equitable collaboration strategy in the midst of a pandemic. This session will cover the challenges and changes needed to steer an enterprise organisation of 10,000 staff to newly adopted working strategies that encompassed multiple key construction projects.

3:20 PM - 4:00 PM NETWORKING BREAK AND EXHIBITION

#EMPLOYEEEXPERIENCE #INTELLIGENTWORKPLACE #EMOTIONALINTELLIGENCE

4:00 PM - 4:30 PM EXPERT PANEL: THE INTELLIGENT + EXPERIENTIAL WORKPLACE

Ken Lynch, [Head of Workplace, ANZ Bank](#), Geoff Sloan, [Global Head of Corporate Real Estate, Macquarie](#) & Damien Sheehan, [Country Head, Australia, IWG](#)

The COVID-19 pandemic accelerated multiple workplace transformation trends that were already well underway before the onset of the COVID-19 pandemic in early 2020. Workplace trends such as smart workplace technology integration, human experience enablement as well as the emergence of diverse 'hybrid workplace' behaviours – these workplace trends have now rapidly gained greater adoption to becoming mainstream as we enter 2022. Our panel will explore the emerging "Intelligent + Experiential" Workplace and what we can expect for the near term and longer term as we shape the "Future of Work" with the continued development and evolution of enterprise workplace ecosystems.

4:30 PM - 4:55 PM EMOTIONAL SKILLS AND THE FUTURE OF WORK

Gauri Bhalla, [Faculty, The School of Life](#)

Emotional intelligence or "EQ" is no longer a "nice to have" optional skillset. The flip side of the technology revolution is that human skills such as creativity, originality, initiative, critical thinking, persuasion, and negotiation will actually grow in importance. Developing our emotional skills is a core part of improving our overall wellbeing at work and our ability to not just survive but thrive. We know that emotional intelligence is important, but we're not always quite sure what it is.

4:55 PM - 5:10 PM CHAIRPERSON'S CLOSING REMARKS

Philip Ross, [Futurologist & CEO, Cordless Group & UNWORK](#) and Dr Kirsten Brown, [Principal - Workplace Consulting, Six Ideas](#)

5:10 PM END OF CONFERENCE