

WORKTECH™ Melbourne

WORK / WORKPLACE / TECHNOLOGY / INNOVATION

EXPLORE THE FUTURE OF WORK AND THE WORKPLACE

ACCENTURE, LEVEL 5/161 COLLINS ST, MELBOURNE

TUESDAY 28TH MARCH

08:30 - 17:15

TWENTY YEARS OF
WORKTECH

20
EST. 2003

HOST PARTNER


accenture

PLATINUM PARTNER



GOLD SPONSORS

 **JLL** / Technologies

VIP DINNER SPONSORS

 **JLL** / Technologies

**VERGE
SENSE**

SUPPORTED BY



THE FIFTH ESTATE  OUR PLANET
OUR REAL ESTATE

unwork

WORKTECH ACADEMY



Managing Director,
WORKTECH Events

A warm welcome to WORKTECH23 Melbourne

WORKTECH23 Melbourne is the conference for all those involved in the future of work and the workplace as well as real estate, technology and innovation.

Never before has the workplace, and the way we work been so high on the agenda for organisations. This exciting event will feature an insightful program of peer-to-peer thought leadership discussions with workplace visionaries, exploring the changing landscape of work and the purpose of the workplace.

Join 100+ workplace decision makers for a full day of networking, discussion, inspiration, and learning. The conference will feature 16+ speakers, 14 different thought leadership sessions, group discussions, and 3 international keynote speakers, plus 2hrs of networking time and the option to speak with leading workplace solutions suppliers in our curated innovation showcase.

We hope you will be able to join us and we are looking forward to welcoming you to the event on 28th March.

Warmest Regards

Isabel

CONTENTS



SPEAKERS



SESSSIONS



CONFERENCE AGENDA



VENUE



WHO ATTENDS



KEY INFORMATION

MEET THE SPEAKERS



WORKTECH23 Melbourne will attract some of the biggest and brightest names to debate, discuss, and divulge the latest thinking on the future of work and the workplace.

The conference will feature leading international thinkers from industry and academia. Our speakers represent some of the world's biggest brands and best universities and research departments, alongside radical visionaries from new innovative organisations.

Through interdisciplinary speakers and learning experience, we focus on bringing cutting edge ideas and inspiration to the workplace community to enhance creativity and move thinking forward. Instead of focusing on peer to peer innovation through imitation, we aim to curate a unique programme, bringing together experts in the fields of people, place and technology and relevant adjacencies to reflect on the future of work and workplace.

Alongside the conference series, the WORKTECH Academy knowledge hub explores the future of work through six key themes: people, place, technology, design, culture and innovation. Creating leading commentary, research and publications that places scientific research at the heart of key business problems. www.worktechacademy.com

Full list of speakers

Megan Antcliff Expertise Collective
Ingrid Bakker Hassell Studio
Suzie Barnett Junglify
Dr. Agustin Chevez Swinburne University
Sophie Cornell JLL Technologies
Rebecca Daff peckvonhartel
Madeleine Dow Lendlease
Paul Edwards Mirvac
Rhonda Emery Department of Transport and Planning
Ross Gangemi Accenture
Eduard Hovy University of Melbourne, Melbourne Connect
Gry Kjær 3XN
Su Lim FreeState
Melissa Marsden COMUNITI
Margaret Matsinos Department of Transport and Planning
Matthew Myerson WORKTECH Academy
Philip Ross UnWork
Tessa Roulston ANZ
Graeme Scannell MYOB
Krupa Solanki UnWork
Aaron Taylor-Harvey Spaces of
Nick Todd ERA-co
Soren Trampedach Workclub
Glenn Turnham ANZ



Suzie Barnett, Junglefy



Aaron Taylor-Harvey, Spaces of



Ross Gangemi, Accenture



Megan Antcliff, Expertise Collective



Graeme Scannell, MYOB



Dr. Agustin Chevez, Swinburne University



Eduard Hovy, University of Melbourne, Melbourne Connect



SESSION HIGHLIGHTS

The future of work and the workplace is on everyone's agenda. This event brings thought leaders together to share cutting edge ideas on the future, from both a people, place, and technology perspective. It will allow an understanding of the key drivers of change and enablers of innovation that will shape how, where and when work takes place.

Key themes we will be discussing at this event include:

The New World of Work: Challenges & Emerging Trends

The pandemic has been a catalyst of re-shaping and re-thinking a new world of work. We examine what's on the horizon for the future of work, looking at how business leaders should respond and what should they prioritise in the months ahead?

Workplace Experience

Companies are accelerating plans to invest in new technology, create flexible working environments and make the office a destination. We will examine the latest workplace technologies and innovations that will support workplace experience and the built environment in 2023 and beyond.

People-Centered Spaces: Cultivating Culture & Engagement

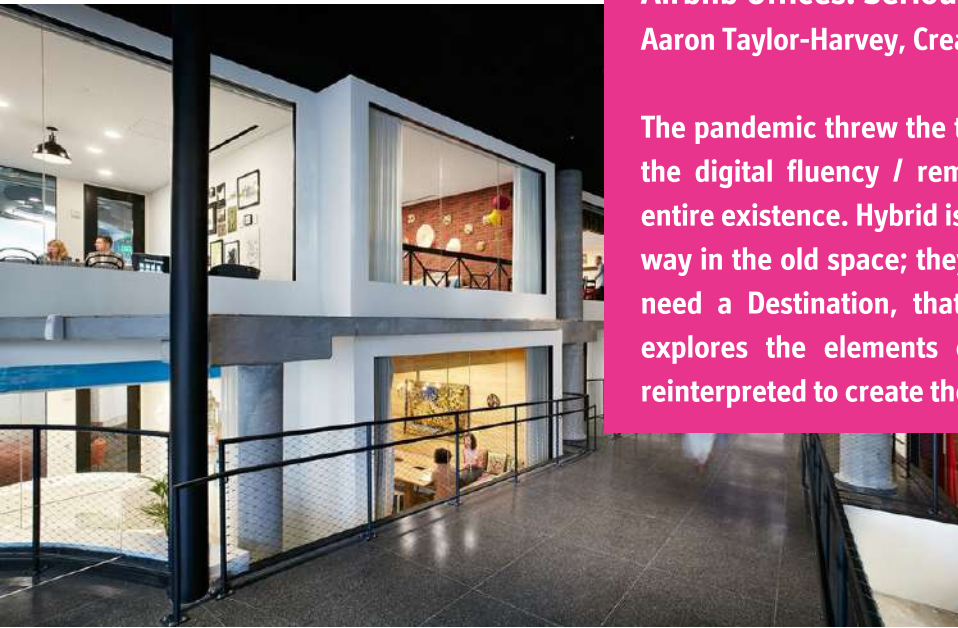
How can companies make the office an attractive proposition to employees who now have more choice in where and how they work? We discuss the post pandemic impact on work, space, buildings and the effects on employee and company productivity, well-being, behaviour, and culture.

KEY THEMES

THE NEW WORLD OF WORK:
CHALLENGES & EMERGING TRENDS

WORKPLACE EXPERIENCE

PEOPLE-CENTERED SPACES:
CULTIVATING CULTURE &
ENGAGEMENT



Airbnb Offices: Seriously Fun and Suddenly Relevant

Aaron Taylor-Harvey, Creative Director, Spaces of

The pandemic threw the typical office environment into stark relief. And the digital fluency / remote productivity of employees threatened its entire existence. Hybrid is the answer, but no one wants to work in a new way in the old space; they need something compelling to return to: they need a Destination, that's what we created at Airbnb, and this talk explores the elements of these spaces that can be recreated and reinterpreted to create the post-covid office all employees deserve.

The Pilgrim's Guide to the Workplace

Dr. Agustin Chevez, Honorary Fellow, University of Melbourne,
Research Lead, Workplace Futures, Swinburne University

Dr. Agustin Chevez walked in isolation for 42 days from Melbourne to Sydney expecting to incubate a unique idea about workplace design. Over a million steps later, his pilgrimage delivered unique insights which he refers to as Signposts – named for their promise to point to a better place to work for both, organisations and the people who inhabit them. In his talk, Agustin will take us in a journey that revisits our assumptions about the way we use space to host the ever-evolving notion of work – an expedition leading not only to better workplaces, but a better version of ourselves.



Unworking: The Reinvention of the Modern Office

Philip Ross, Futurologist & CEO, Cordless Group & UnWork

Over the past hundred years, the office has been integral to the development of modern society. It has shaped the architecture of our cities, the behaviour of our organizations and the everyday movements of millions of people. In 2020, however, the global pandemic brought our attendance in the office to an abrupt halt and triggered a complete re-evaluation of the purpose of the workplace. Philip will advance a manifesto for 'Unworking' - unlearning old habits established for an outdated office and creating new ones fit for an age of digital technology, innovation, and diverse workforces.

08:30 CONFERENCE OPENS

09:00 CHAIRPERSON'S OPENING REMARKS & WELCOME ADDRESS

Krupa Solanki, **Innovation Director, UnWork**



09:15 UNWORKING: THE REINVENTION OF THE MODERN OFFICE

Philip Ross, **Futurologist & CEO, Cordless Group & UnWork**



Over the past hundred years, the office has been integral to the development of modern society. It has shaped the architecture of our cities, the behaviour of our organizations and the everyday movements of millions of people. In 2020, however, the global pandemic brought our attendance in the office to an abrupt halt and triggered a complete re-evaluation of the purpose of the workplace. Philip will advance a manifesto for 'Unworking' - unlearning old habits established for an outdated office and creating new ones fit for an age of digital technology, innovation, and diverse workforces.

09:35 WHAT'S ON THE CARDS FOR 2023? TOP 20 TRENDS EXPLORED

Matthew Myerson, **Development Director, WORKTECH Academy**



Drawing on the latest WORKTECH Academy Trend Reports and stories, data, and evidence from around the Academy network, WORKTECH Academy Development Director, Matthew Myerson paints a picture of the key global trends that are set to shape the next 12 months for organisations.

09:50 THE IMPACT ON AI ON THE FUTURE OF WORK

Eduard Hovy, **Executive Director, University of Melbourne, Melbourne Connect**



AI has entered the market in a big way. New applications are continuously and rapidly being introduced. How worried should we be? Will AI take away jobs? The talk provides information about the economic impact of AI, how new machine learning systems like ChatGPT work, and why they still have serious limitations.

10:10 AIRBNB OFFICES: SERIOUSLY FUN AND SUDDENLY RELEVANT

Aaron Taylor-Harvey, **Creative Director, Spaces of**



The pandemic threw the typical office environment into stark relief. And the digital fluency / remote productivity of employees threatened its entire existence. Hybrid is the answer, but no one wants to work in a new way in the old space; they need something compelling to return to: they need a Destination, that's what we created at Airbnb, and this talk explores the elements of these spaces that can be recreated and reinterpreted to create the post-covid office all employees deserve.

10:30 THE SEVEN MEGATRENDS SHAPING OUR FUTURE GENERATION

Madeleine Dow, **Senior Workplace Strategy and Experience Consultant, Lendlease** / Ingrid Bakker, **Principal and Commercial & Workplace Sector Leader, Hassell**



We know Australia is at a pivotal point. There is a tidal wave of disruption on the way, and it's critical we take steps now to get ahead. We need to deeply understand and respond to the significant megatrends that will shape the future world, and importantly inform what the next generation of work looks like. Our panellists take a deep dive into the key megatrends driving this powerful change and look to how we can capture the enormous opportunities that lay ahead.

10:50 GROUP DISCUSSION

Nick Todd, **Australian Head of User Strategy & Experience ERA-co**



We will invite all our speakers back on stage for a group discussion with the audience.

11:00 COFFEE AND NETWORKING BREAK

11:30 GOVERNMENT WORKPLACE DONE DIFFERENTLY

Rebecca Daff, **Practice Director, peckvonhartel** / Rhonda Emery, **Director, Accommodation and Workplace Services, People & Business Division, Department of Transport and Planning** / Margaret Matsinos, **Program Lead, Accommodation & Workplace Services, Business Operations & Improvement, Department of Transport and Planning**

peckvonhartel



At the end of 2019 the Department of Transport had a vision for a new workplace in Ringwood. With initial stakeholder engagement commenced, suddenly the world changed. We were sent home and had to work out how we would not only deliver on a 13,000 square meter workplace for the department, but what we needed to do to futureproof a workplace design through uncertain times. Rhonda Emery, Director at the Department of Transport and Planning together with Rebecca Daff, architect and Director at peckvonhartel discuss the challenges, the innovations and the lessons of a Government workplace project, done differently.

11:50 HOW YOUR WORKPLACE CAN BE AN ASSET, NOT A LIABILITY: REIMAGINING YOUR WORKPLACE FOR HIGH PERFORMANCE

Melissa Marsden, **Director, COMUNITI**



With 4 in 5 people wanting to continue to work in a hybrid model, we've realised the true value our workplaces provide, and it's not somewhere for us to "go" to "work". As organisations face the challenges of underutilised office space, fading employee loyalty and rising internal conflicts, what emerges is a lack of human connection. An ingredient essential in creating high performing teams. With a data led, evidence-based approach you can design a workplace for any future, giving you investment confidence and establishing your workplace as one of the primary drivers of ROI in your business.

12:10 "EARNING THE COMMUTE" - A DISCUSSION ON THE POST COVID WORKPLACE AND WHAT REALLY MATTERS

Nick Todd, **Australian Head of User Strategy & Experience ERA-co**



Nick will lead an interaction session where he and the panellist will explore the future of the office and the challenges companies are facing whilst answering questions from the audience.

12:20 GROUP DISCUSSION

Nick Todd, **Australian Head of User Strategy & Experience ERA-co**



We will invite all our speakers back on stage for a group discussion with the audience.

12:30 LUNCH AND NETWORKING BREAK

13:30 THE PILGRIM'S GUIDE TO THE WORKPLACE

Dr. Agustin Chevez, **Honorary Fellow, University of Melbourne, Research Lead, Workplace Futures, Swinburne University**



Dr. Agustin Chevez walked in isolation for 42 days from Melbourne to Sydney expecting to incubate a unique idea about workplace design. Over a million steps later, his pilgrimage delivered unique insights which he refers to as Signposts – named for their promise to point to a better place to work for both, organisations and the people who inhabit them. In his talk, Agustin will take us in a journey that revisits our assumptions about the way we use space to host the ever-evolving notion of work – an expedition leading not only to better workplaces, but a better version of ourselves.

13:55 EXPERT PANEL: WORKPLACE EXPERIENCE

Soren Trampedach, **Founder & CEO, Workclub** / Dr. Agustin Chevez, **Research Lead, Workplace Futures, Swinburne University** / Graeme Scannell, **Head of Workplace Experience, MYOB**



This session explores how best to create an optimal environment for employees to do their work. How do we measure what is great? How do we successfully work across functional real estate, human resources (HR) and information technology (IT) to deliver it?

14:15 HYBRID WORK BIAS AND WHY IT'S DISABLING COLLABORATION

Ross Gangemi, **Managing Director and Digital Workplace Lead ANZ, Accenture**



We assume hybrid work is understood but organisations still struggle to make this work. Leaders may try to enforce days in the office but this raises problems: some of your people avoid the office while others are keen to return which creates an imbalance. The challenge is how to support diverse preferences and create an environment in which people can thrive, innovate and create together, wherever they might be.

14:35 EXPERT PANEL: EMERGING TECHNOLOGIES RE-SHAPING THE WAY WE WORK

Sophie Cornell, **Senior Account Director, JLL Technologies** / Su Lim, **Global Managing Director, FreeState** / Tessa Roulston, **Workplace Change Manager, ANZ** / Glenn Turnham, **PropTech Initiative Lead, ANZ**



In the age of the “anywhere office”, technology will play a more vital role than ever. It is now crucial for businesses to leverage data to understand how people are using workspaces and implement technologies that will keep teams connected, organized, safe and ultimately enhance their experience and productivity

14:55 GROUP DISCUSSION

Nick Todd, **Australian Head of User Strategy & Experience ERA-co**



Nick will lead an interaction session where he and the panellist will explore the future of the office and the challenges companies are facing whilst answering questions from the audience.

15:05 COFFEE AND NETWORKING BREAK

CONFERENCE AGENDA PREVIEW

ACCENTURE, LEVEL 5/161 COLLINS ST, MELBOURNE

15:35 HUMANIZING THE HIGH RISE – QUAY QUARTER TOWER, SYDNEY

Gry Kjær, **Partner, 3XN**



Quay Quarter Tower (QQT), World Building of the Year 2022 by the World Architecture Festival, eschews the conventions of uniform high-rise design to craft a community-oriented vertical village within the city. Quay Quarter Tower humanizes the high rise. The 206-metre commercial tower is composed of five stacked and shifting volumes, each arranged around an atrium and all oriented to face the iconic Sydney Harbour. The atria accommodate the kinds of informal meetings that encourage knowledge sharing and commingling to activate the workspace, aligning with 3XN's design philosophy that architecture shapes behaviour. At the base of each block, the atria open out onto generous terraces which provide a space for respite even within the "heart" of the tower.

15:55 THE WORKPLACE OUTSIDE THE WALLS - A PRECINCT-BASED APPROACH TO WORKPLACE DESIGN

Megan Ancliff, **Founder, Expertise Collective**



When your co-tenants are collaborators and competitors, the ability of your workforce to innovate is distributed. When technology is at the centre, and you are driving solutions to global challenges, what does the innovation district model have to offer and how do the public and private sectors partner to deliver on the promise?

16:15 TRADING PLACES: DESIGNING FOR NEXUS VALUE IN MIXED-USED DEVELOPMENT

Paul Edwards, **General Manager, Strategy & Customer, Mirvac**



The new 2023 Mirvac and WORKTECH Academy report will explore the 'nexus value' in mixed-use development when different property assets and typologies are purposefully co-assembled as part of a new value proposition.

16:35 HOW TO CREATE A NATURE POSITIVE FUTURE

Suzie Barnett, **CEO, Junglefy**



Join Junglefy's Suzie Barnett for a deep dive into the research that shows plants not only improve our health and wellbeing but they pay off by doubling and sometimes tripling your ROI. Suzie will show the transformative power of nature to boost biodiversity richness, improve air quality, reduce temperatures and storm water pollution. She will inspire you to consider how you can create a nature positive future that will continue to give back to its place and the community.

16:55 GROUP DISCUSSION

Nick Todd, **Australian Head of User Strategy & Experience ERA-co**



Nick will lead an interaction session where he and the panellist will explore the future of the office and the challenges companies are facing whilst answering questions from the audience.

17:05 CHAIRPERSON'S CLOSING REMARKS

Krupa Solanki, **Innovation Director, UnWork**

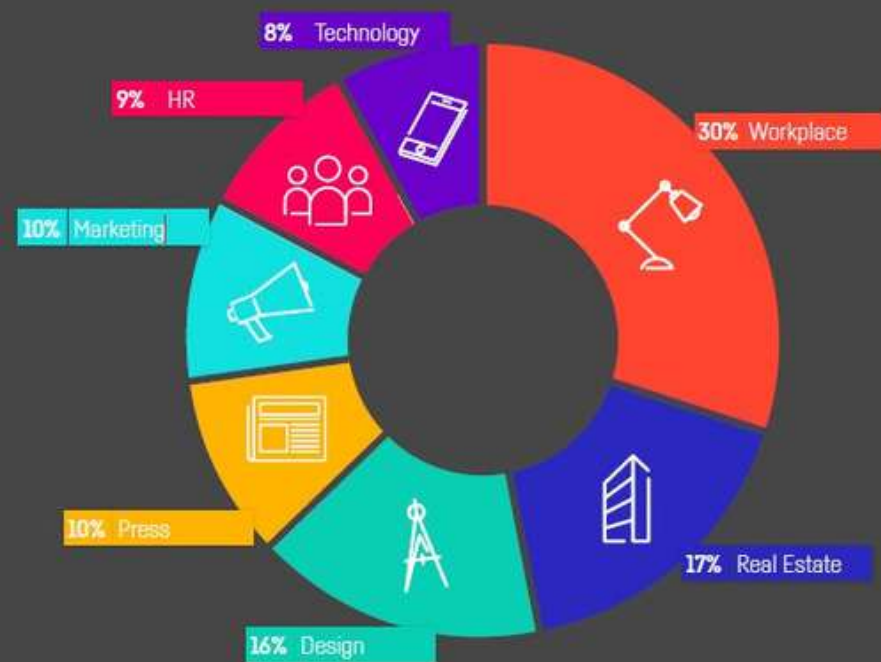


17:15 CONFERENCE CLOSES

17:30 TOUR OF QUEEN & COLLINS



WHO ATTENDS



A well-spoken and experienced group of presenters providing leading edge subjects current topics and statistics. A great place to learn about new ideas.

WORKTECH DELEGATE, DELOITTE



Informative, interesting views on workplace design, planning technology and workers

WORKTECH DELEGATE, BANK OF MONTREAL



BOOK NOW

<https://worktechevents.com/events/worktech23-melbourne/>

KEY INFORMATION

Date

When: Tuesday 28th March 2023

Where: Accenture, Collins Street, Melbourne

How to book:

Visit: <https://worktechevents.com/events/worktech23-melbourne/>

Offer a Special Rate to Your Network!

Become a marketing partner for this event and qualify for a special rate for your colleagues, complimentary passes for yourself, logo exposure for your organisation, and more!

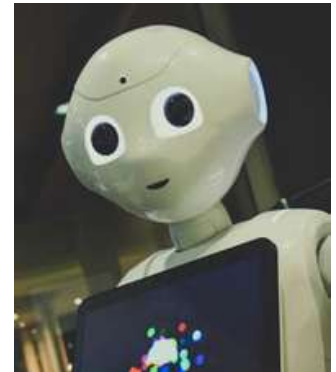
If you are part of a group that would like to attend and are looking for a joint group rate please get in touch to arrange a bespoke ticket price.

Become a WORKTECH Ambassador

We're looking for people that love the future of work and the workplace and social media. People who are willing to become part of our team and help spread the word to the masses. There will be a free event ticket available to successful applicants.

For more information on the above initiatives, please contact:

kirsty.darlington@worktechevents.co.uk



WORKTECH™

WORK / WORKPLACE / TECHNOLOGY / INNOVATION

7 St. John's Mews
13 St. John's Road, Hampton Wick
Kingston upon Thames, KT1 4AN, UK

+44 (0)20 89 77 89 20
info@unwired.eu.com

www.worktechevents.com

TWENTY YEARS OF
WORKTECH

20

EST. 2003