

# WORKTECH™ London

WORK / WORKPLACE / TECHNOLOGY / INNOVATION

## Special Edition

# EXPLORE THE FUTURE OF WORK AND THE WORKPLACE

CONVENE, 22 BISHOPSGATE, LONDON

MONDAY 18th - WEDNESDAY 20th NOVEMBER

### HOST SPONSOR

**convene**™

### PLATINUM SPONSOR

**smartspaces**

**XY** SENSE

### GOLD PLUS SPONSOR

**JLL** / Technologies

**SwiftConnect**

### GOLD SPONSOR

**PointGrab**

**SIMMTRONIC**

### SILVER SPONSORS

**UPFLEX**

**your  
workspace**

**MODDO**

**Verkada**

**DISRUPTIVE  
TECHNOLOGIES**

**yellowbox**

**nhance**™  
DIGITAL BUILDTECH

### BRONZE SPONSOR

**APPSPACE** **cmd.**  
**comeen** **R C O M Z**  
INTELLIGENT OFFICES

### BESPOKE SPONSOR

**mapiq** **zoom**

### VIP DINNER SPONSOR

**XY** SENSE

### SUPPORTED BY

**Property Week** **Cordless Consultants** **devIT**  
**AV** **unwork** **WORKTECH ACADEMY**



Conference Producer,  
WORKTECH Events

## A warm welcome to WORKTECH24 London Special Edition

WORKTECH24 London Special Edition is the conference for all those involved in the future of work and the workplace as well as real estate, technology and innovation.

WORKTECH brings innovative ideas and inspiration to the workplace community through inter-disciplinary speakers and learning experience to enhance creativity and move thinking forward.

Join over 250 senior professionals from real estate, facilities, HR, technology, executive management, architecture, design and professional advisors to listen to global thought leaders, further their knowledge and share best practise and expertise.

Spanning three days and multiple locations, this festival brings together senior business leaders to explore the future landscape. By identifying challenges and emerging trends, our intention is to guide business leaders on how to navigate and prioritise in the months ahead.

Alongside the conference, we will have a curated innovations exhibition taking place in the breakout areas for attendees to meet with our education partners, complementing learning during the day. After the conference closes, all delegates will be invited to continue networking at the WORKTECH drinks reception.

We hope you will be able to join us and we are looking forward to welcoming you to the event on 18th- 20th November.

Warmest regards,  
Caroline

# MEET THE SPEAKERS



WORKTECH24 London Special Edition will attract some of the biggest and brightest names to debate, discuss, and divulge the latest thinking on the future of work and the workplace.

The conference programme features speakers from leading international thinkers from industry and academia.

Through interdisciplinary speakers and learning experiences, we focus on bringing cutting edge ideas and inspiration to the workplace community to enhance creativity and move thinking forward. Instead of focusing on peer to peer innovation through imitation, we aim to curate a unique programme, bringing together experts in the fields of people, place and technology and relevant adjacencies to reflect on the future of work and workplace.

Alongside the conference series, the WORKTECH Academy knowledge hub explores the future of work through six key themes: people, place, technology, design, culture and innovation. Creating leading commentary, research and publications that places scientific research at the heart of key business problems. [www.worktechacademy.com](http://www.worktechacademy.com)

**Simon Booth** Clifford Chance  
**Ellie Caley** Senior Workplace & Wellbeing Consultant  
**Ajay Chowdhury** Serial Entrepreneur & Author  
**Jeremy Coleman** Norton Rose Fulbright  
**Jess Costanzo** Simmtronic  
**Audrey Cowan** Burges Salmon LLP  
**David Crew** Hogan Lovells  
**Rhebeckha D'Silva** Macquarie Group Limited  
**Dan Drogman** Smart Spaces  
**Pinar Erdem** AIG  
**Sol Enenmoh** HSBC  
**James Frankis** Convene  
**Catherine Gall** Chaire ETI Research Lab  
**Rob Garlick** Citi Global Insights  
**Matt Graham** EY  
**Christopher Higgins** GSK  
**Alyssa Jaffer** Deliveroo  
**Max Jennings** Workplace & Wellbeing Consultant  
**James Kendall** SwiftConnect  
**Ravi Lakhani** Cordless Consultants  
**Alexa Lightner** Mapiq  
**Bengt Lundberg** Disruptive Technologies  
**Marnix Mali** Booking.com  
**Matthew Marson** Managing Director, EMEA Advisory  
**Michelle Marwood** Norton Rose Fulbright  
**Kasia Maynard** WORKTECH Academy  
**Carlos Moreno** Author of The 15-Minute City  
**Nigel Miller** Managing Director, Cordless Consultants  
**Jeremy Myerson** WORKTECH Academy  
**Thomas Caspersen** Nielsen VP EMEA  
**Andrew Thexton-Pee** Thames Water  
**Imogen Privett** Unwork  
**Gerald Waterfall** IDM  
**Jane Watson** XY Sense  
**David Xides** ModoLabs





Ajay Chowdhury, Serial Entrepreneur & Author



Alyssa Jaffer, Deliveroo



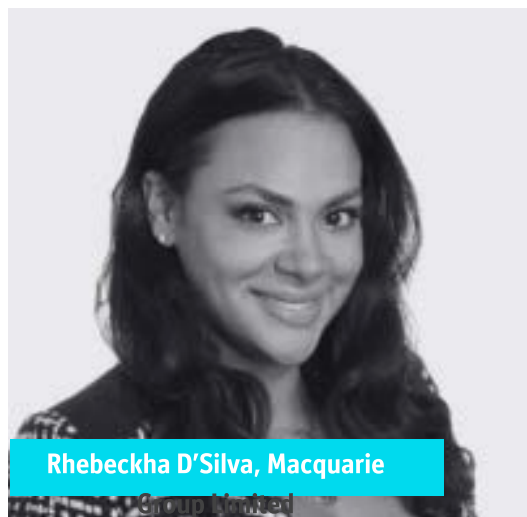
Christopher Higgins, GSK



Jane Watson, XY Sense



Andrew Thexton-Pee, Thames Water



Rhebeckha D'Silva, Macquarie



Sol Enenmoh, HSBC



Michelle Marwood, Norton Rose Fulbright



Marnix Mali, Booking.com



Matt Graham, EY



Audrey Cowan, Burges Salmon LLP



David Crew, Hogan Lovells

# SESSION HIGHLIGHTS



Key themes we will be discussing at this event include:

## [The New World of Work: Challenges & Emerging Trends](#)

The pandemic has been a catalyst both re-shaping and re-thinking a new world of work. We examine what's on the horizon for the future of work, looking at how business leaders should respond and what should they prioritise in the months ahead.

## [Transforming Place: World Cities and Workplace](#)

Unique perspectives on people, space and culture. We explore the challenges of change and discuss new ideas & opportunities for the future of living and working in world cities and workplace.

## [People Centred Workplaces: Cultivating Culture & Engagement](#)

How can companies make the office an attractive proposition to employees who now have more choice in where and how they work? We examine the post-pandemic impact on work, space, buildings and the effects on employee and company productivity and well-being, behaviour, and culture.

## [Deep Dive: The Future of Work](#)

These next sessions see us break out into 2 streams to deep dive issues across attracting top talent, how to craft hospitality-driven workplace experiences and align workplace with sustainable and responsible business practices.

## [The New Workplace Revolution](#)

What does the future of work and workplace look like? What strategies are organisations adopting and what is the impact on the built environment and commercial real estate? In these last sessions of the day, we explore your perspectives and highlight collective viewpoints

### KEY THEMES

THE NEW WORLD OF WORK:  
CHALLENGES & EMERGING TRENDS

TRANSFORMING PLACE: WORLD  
CITIES AND WORKPLACE

PEOPLE CENTRED WORKPLACES:  
CULTIVATING CULTURE,  
COLLABORATION & ENGAGEMENT

DEEP DIVE: THE FUTURE OF WORK

THE NEW WORKPLACE REVOLUTION

## 10:00 - 11:30AM - TUESDAY 19TH NOVEMBER

### FINANCIAL ROUNDTABLE HOSTED BY CONVENE, SANCROFT

Future Workplace Panel. Join us for an enlightening discussion where industry experts share insights from projects at pivotal stages of development. With a focus on 'return on experience', this dynamic discussion brings together financial services firms at various stages of curating their workplaces.

### FUTURE FINANCIAL WORKPLACE

**Matt Graham**, EMEA Consulting Lead, Office Solutions, ESPM, Enterprise Technology, EY  
**Rhebeckha D'Silva**, Head of Corporate Real Estate EMEA Corporate Operations Group, Macquarie Group Limited  
**Pinar Erdem**, Head of Corporate Real Estate, EMEA and APAC, AIG  
**Catherine Yates**, Lead Strategic Workplace Change Manager, NatWest Group  
**Patricia Riquelme**, Chief of Staff to COO, Santander

Future-proofing the financial workplace is now an urgent corporate mission, not just an aspiration. Financial service firms are being pulled in multiple directions as they try to establish a new working model. At this pivotal moment, we examine the latest challenges and new workplace strategies



### CONFERENCE OPENS

### REGISTRATION AND PRE-EVENT NETWORKING

### CHAIRPERSON'S WELCOME

**Kasia Maynard**, Head of Research and Editorial, WORKTECH Academy



### WELCOME TO CONVENE

**James Frankis**, Head of Product, Convene



### POETRY

**Matt Harvey**, WORKTECH Poet in residence

Poet, columnist, enemy of all that's difficult and upsetting. Matt's way with words has taken him from Totnes to the All-England Tennis Club via Radio 4's Saturday Live, The Edinburgh Festival and the work section of the Guardian.

### THE NEW WORLD OF WORK: CHALLENGES & EMERGING TRENDS

The pandemic has catalysed the re-shaping and re-thinking a new world of work. We examine what's on the horizon for the future of work, looking at how business leaders should respond and what should they prioritise in the months ahead.

### THE FUTURE IS HERE

**Ajay Chowdhury**, serial entrepreneur, futurist, venture capitalist, author and ex-partner BCG. Co-founder of Shazam, Chairman of Cambridge Enterprise, Cambridge University's spin-out arm, Voted top 100 BAME business leaders in the UK by The Sunday Times



Ajay will explore the transformative impact of the latest advancements in technology and AI, heralding a new tech revolution. This revolution will profoundly affect every individual and industry, from healthcare to finance and beyond. As we stand on the cusp of this unprecedented change, companies and individuals must adapt to survive and thrive. Embrace the future by understanding how these innovations will redefine our world and prepare to navigate the challenges and opportunities ahead. The future is not just approaching; it is already here.

## AI - WHAT'S COMING NEXT? WHY IS THIS TIME DIFFERENT

**Jeremy Coleman**, Director of Innovation,  
Norton Rose Fulbright  
**Rob Garlick**, Head of Innovation,  
Technology & the Future of Work, Citi  
Global Insights



Join industry leaders from the Legal and Banking sectors for a forward-looking discussion on how AI is transforming the workplace. Looking 25 years into the future, they will explore the evolving expectations for people—focusing on upskilling, reskilling, and human-AI collaboration. The conversation will also address the impact on physical spaces, including the integration of AI agents, voice technology, and digital twins, and how these innovations will shape productivity and workplace design. The session will highlight the importance of adapting to global dynamics, ensuring all regions and sectors are positioned to benefit from these advancements.

## DIGITAL TRANSFORMATION – UNLOCKING THE POWER OF DATA AND TECHNOLOGY

**Andy Targell**, Global Head of Real Estate  
Technology, JLL Technologies



As the design of the workplace shifts towards more collaboration and community, technology will both enhance connections between people and optimise the use of physical spaces. New forms of collaboration tech, smart sensors, mobile applications and data analytics will all play a central role in new models of work. Using extensive data and examination of the latest trends and real estate markets across the world, this session explores how to empower business in the new world of work and drive the digital transformation of the workplace to boost performance and productivity.

## INNOVATION PLATFORM : UPFLEX

**Christophe Garnier**, CEO & Co-Founder, Upflex



## INNOVATION PLATFORM : YELLOWBOX

**Vanessa Zhao**, Head of Partnerships, Yellowbox



## COFFEE AND NETWORKING

### TRANSFORMING PLACE: WORLD CITIES AND WORKPLACE

Unique perspectives on people, space and culture. We explore the challenges of change and discuss new ideas & opportunities for the future of living and working in world cities and workplace.

## POETRY

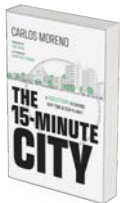
**Matt Harvey**, WORKTECH Poet in  
residence

Poet, columnist, enemy of all that's difficult and upsetting. Matt's way with words has taken him from Totnes to the All-England Tennis Club via Radio 4's Saturday Live, The Edinburgh Festival and the work section of the Guardian.



## THE 15-MINUTE CITY: A SOLUTION TO SAVING OUR TIME AND OUR PLANET

**Carlos Moreno**, Researcher, Scientist, Author of *The 15-Minute City*  
**Catherine Gall**, Executive Director, Chaire ETI - IAE Paris Sorbonne School  
**Jeremy Myerson**, Chairman, WORKTECH Academy



In this thought-provoking session, Professor Carlos Moreno, the world-acclaimed visionary behind *the 15-Minute City*, presents his urban concept and its implications for the future of work, via video. Catherine Gall and Jeremy Myerson then delve into the transformative potential of the 15-Minute City model, which has gained widespread support from mayors globally seeking to reduce car dependency, enhance quality of life, and address pressing challenges such as sustainability and post-pandemic recovery. The session will look at strategic approaches for designing human-centric cities based on innovative science-based solutions.

## GSK: BUILDING ONE OF THE HEALTHIEST WORKPLACES IN THE WORLD

**Chris Higgins**, Head of EMEA, Workplace, Real Estate and Facilities, GSK, **Max Jennings** Senior Workplace and Wellbeing Consultant, ART Health Solutions



Hear how a programme of scientific sprints to develop future ready workplace design standards and their fundamental metrics are helping GSK create one of the world's healthiest workplaces. Chris and Max will share innovative ways to measure previously unquantifiable aspects of the workplace, putting employee wellbeing and cognitive performance at the heart of decision making. Hear about the holistic measurement using smart wearables, pulse surveys measuring health and wellbeing, and cognitive performance through state-of-the-art app technology. Chris and Max will showcase how the data informs and ultimately measures the success of GSK's new global HQ – a place where everyone is supported to thrive and get ahead together

## THE METRICS THAT MATTER: DRIVING WORKPLACE SUCCESS IN 2024

**Jane Watson**, Regional Manager EMEA, XY Sense



Have you got workplace analysis paralysis? You're not alone. In this session, we explore the workplace metrics that matter and offer guidance on using data to drive transformative workplace change in 2024. Using case studies and learnings from workplace teams, we examine: current UK workplace utilisation trends and benchmark what they reveal about our changing strategic priorities in CRE; the metrics that actually matter to a successful hybrid workplace; and how to successfully balance 'the art and science' of successful hybrid workplace.

## EXPERT PANEL DEBATE: WORKPLACE INNOVATIONS IN REAL ESTATE LANDSCAPE

**Chris Higgins**, Head of EMEA, Workplace, Real Estate and Facilities, GSK  
**Sol Enemoh**, Director within Group and Head of AI for DCOO, HSBC, **Gerald Waterfall**, UKI & Northern Europe Market Leader, IBM Global Real Estate

In this dynamic panel discussion, industry experts spotlight learnings from projects at critical stages of development exploring key considerations for attracting top talent, crafting hospitality-driven workplace experiences and aligning workplace developments with sustainable and responsible business practices.





## INNOVATION PLATFORM: YOUR WORKSPACE

Tom Woodley, Corporate Sales Director, Your Workspace



## INNOVATION PLATFORM: MODOLABS

David Xides, Enterprise Account Executive, ModoLabs



## LUNCH AND NETWORKING

### PEOPLE CENTRED WORKPLACES: CULTIVATING CULTURE & ENGAGEMENT

How can companies make the office an attractive proposition to employees who now have more choice in where and how they work? We examine the post pandemic impact on work, space, buildings and the effects on employee and company productivity and well-being, behaviour and culture .

## CASE STUDY & VIRTUAL TOUR: BOOKING.COM'S NEW HQ AND VISION FOR THE FUTURE OF WORK

Marnix Mali, Director of Real Estate and Workplace Services, Booking.com



Join Marnix as he takes us behind the scenes of their newly opened headquarters in the heart of Amsterdam. This state-of-the-art campus, which began its journey in 2016, is the result of extensive research and numerous work style pilots designed to create the optimal environment for employee productivity and satisfaction. Marnix will share insights into how smart technology is used throughout the campus to gather data on space utilization, occupancy, and environmental conditions, allows for a data-driven approach to managing the workspace to support flexible working arrangements, ensuring the space can adapt to future needs driving decisions that enhance the work experience. He will also explore how the campus's flexible design, from adaptable event spaces to coworking areas in the central atrium, meets the evolving needs of a dynamic workforce. Discover how Booking.com has created a workplace that balances social interaction with individual productivity, setting a new standard for corporate real estate.

## INNOVATION PLATFORM: DATA-DRIVEN CHANGE MANAGEMENT, WHAT'S NEXT?

Alexa Lightner, Global Business Development Manager, Mapiq



Alexa shares her experience of leveraging data from pilot programs and workforce analysis, to create adaptive strategies that anticipate challenges and drive sustainable change. We discuss embedding continuous learning and data analysis into the workplace to foster innovation and agile change management.

## INNOVATION PLATFORM: NHANCE

Krishna Prasad, Co-founder and Chief Product Officer, nhance  
Jackson Matthews, Managing Director (UK), nhance



## DEEP DIVE: THE FUTURE OF WORK

These next sessions see us break out into 2 streams to deep dive cutting edge smart building technologies, issues across attracting top talent, how to craft hospitality-driven workplace experiences and align workplace with sustainable and responsible business practices.



## STREAM 1: DATA AND TECHNOLOGIES

### INNOVATION PLATFORM: THE DATA-DRIVEN WORKPLACE: PRACTICAL APPLICATIONS FOR SAVING COST USING SENSORS

Thomas Caspersen, VP EMEA, Disruptive Technologies



In the workplace of the future, employees feel at home and businesses gain an edge. Modern workspaces waste no real estate, replacing fixed desks with flexible, collaborative areas. But how do we optimize these spaces while cutting costs? The answer is data. Sensor data shows how spaces are used, but knowing what is only half the battle. In this eBook, we explore how to turn this data into actionable insights for real cost savings and better returns on investment. Discover the future of efficient and effective workplaces.

### POWERING THE WORLD'S SMARTEST SKYSCRAPER

Dan Drogman, CEO and Founder, Smart Spaces



22 Bishopsgate has been heralded as the world's smartest skyscraper. It's an impressive building that stands among the world's elite office spaces. In this talk Smart Spaces CEO, Dan Drogman, discusses the tech that has brought the London development such global acclaim. Above all, this talk will look to remove the complexity and noise often associated with smart buildings while diving into the human motivations that sit at the heart of modern developments.

## EXPERT PANEL DEBATE: WORKPLACE INNOVATION – DATA, SENSORS AND BENCHMARKING

**Ravi Lakhani**, Head of Smart Solutions, Cordless Consultants

**Dan Drogman**, CEO and Founder, Smart Spaces

**Jess Costanzo**, Commercial, Director, Simmtronic

**Lewis Pinner**, RVP Enterprise Sales - EMEA, Verkada

**Amir Einav**, CEO, PointGrab



This dynamic panel explores the transformative impact of data, sensors, and benchmarking in the modern workplace. Industry experts discuss how the integration of advanced sensors and data analytics is revolutionising operational efficiency, employee productivity, and business strategies. The panel will explore the role of benchmarking in setting performance standards, driving continuous improvement, and fostering a culture of innovation. Attendees will gain valuable insights into leveraging these technologies to create smarter, more responsive work environments.

## STREAM 2: DESIGN AND EXPERIENCE

### FUTURE WORKPLACE | EMPLOYEE ENGAGEMENT

**Imogen Privett**, Associate Director of the Workplace Innovation team, UnWork

**Andrew Thexton-Pee**, Director of Property, Thames Water

**Alyssa Jaffer**, Senior Global Communications Manager



Industry experts discuss shifts to more experience-driven approaches to workplace design and the evolving priorities of leaders within the industry. How is the industry responding to the future of work in the long-term? And what can we learn from these large organisations about how to create and deliver great experiences? Also, as we move forward into a new era of work, how does future work consider under-represented groups? This session will explore how organisations can build more inclusive workplaces to ensure the future of work works for us all.

### CASE STUDY - REVOLUTIONISING WORKPLACE EFFICIENCY: THE FUTURE OF MOBILE ACCESS CONTROL

**James Kendall**, Director of Enterprise Engineering, SwiftConnect and other speaker to be announced.



Hear how to integrate all of the systems that govern physical access in commercial real estate properties and multi-national organisations to enable employees to use their mobile devices as digital badges at single buildings and across entire office portfolios. Leveraging NFC technology, users simply present their Apple and Android devices to readers and locks for easy, connected access to places, spaces and, things – such as printers, lockers and more – even when their devices are in power reserve mode. See how SwiftConnect enables a seamless access journey that elevates the user experience, increases operational efficiency and enhances security.

## QUICK BREAK & GRAB DRINKS

### THE NEW WORKPLACE REVOLUTION

What does the future of work and workplace look like? What strategies are organisations adopting and what is the impact on the built environment and commercial real estate?

## MOCK THE WORKPLACE: WORKPLACE REVOLUTION EDITION

**Ravi Lakhani**, Head of Smart Solutions, Cordless Consultants, **Nigel Miller**, Managing Director, Cordless Consultants, **Kasia Maynard**, Head of Research & Editorial, WORKTECH Academy, **Imogen Privett**, Director - Workplace Innovation & Senior Research Associate

In this highly interactive and light-hearted workshop, panellists and members of the audience repurpose a famous TV Show format to explore the WORKPLACE REVOLUTION. Pick up tips and ideas, and come prepared with a few of your own to drop into the mix. Topics covered:

- Digital transformation, data and AI
- Merging the digital and physical workplace
- Magnetising the built environment
- Workplace's role in future talent attraction and attention
- Net Zero, ESG and the future of workplace

## CHAIRPERSON'S CLOSING REMARKS

**Kasia Maynard**, Head of Research and Editorial, WORKTECH Academy



This session brings together the outputs across the multiple tours, showcases, talks, and networking events that have taken place across London over the past two and a half days:

- Legal Roundtable
- Financial Roundtable
- Tours across the capital

## DRINKS, DJ & ROUNDTABLES





# WORKTECH LONDON: SPECIAL EDITION

This year's WORKTECH London is a Special Edition featuring two and a half days of office tours, networking opportunities, and a conference filled with sessions from leading voices, seminars, and debates for in-depth discussions. Our programme promises a diverse and stimulating experience with thought-provoking debates covering a wide range of subjects.

We start the conference with seminars and panels covering a wide range of topics, including the key challenges facing today's financial and legal workplace occupiers and how new technologies are shaping the future workplace experience.

Additionally, the conference will feature visits to new workspaces and innovative experience spaces. Attendees can also enjoy numerous networking opportunities, including the WORKTECH Drinks Reception, a VIP Dinner, and a Conference Party.

Join us as we explore the intersection of people, place, and technology at this pivotal moment for the office. Engage in the discussions, think openly, and forge new connections amidst the vibrant backdrop of London.

To find out more about how to sign up for the tours and roundtables, see further down the brochure for details.

## WORKPLACE TOURS AND ROUNDTABLES

Delegates can register their interest to join us on Monday 18th and Tuesday 19th for the legal roundtable and exclusive workplace tours. Timings to be announced closer to the conference. *Please note that spaces are limited and subject to availability.*

### MONDAY 18th NOVEMBER

#### WORKPLACE TOURS - ZOOM EXPERIENCE CENTRE

zoom

Join us for an exclusive experience at Zoom's cutting-edge London Experience Centre and Engagement Hub, where the future of workspaces is brought to life through innovative technology and inspiring design. Experience immersive and interactive setups like the 125-foot Digital Lens Wall and the world's first curved LED screen with multi-touch interactivity, which enhance engagement and communication. Visit the Boardroom of the Future which showcases state-of-the-art meeting technology that improves productivity and collaboration.



#### LEGAL ROUNDTABLE AND LAUNCH PARTY HOSTED BY BURGESS SALMON

Burgess  
Salmon

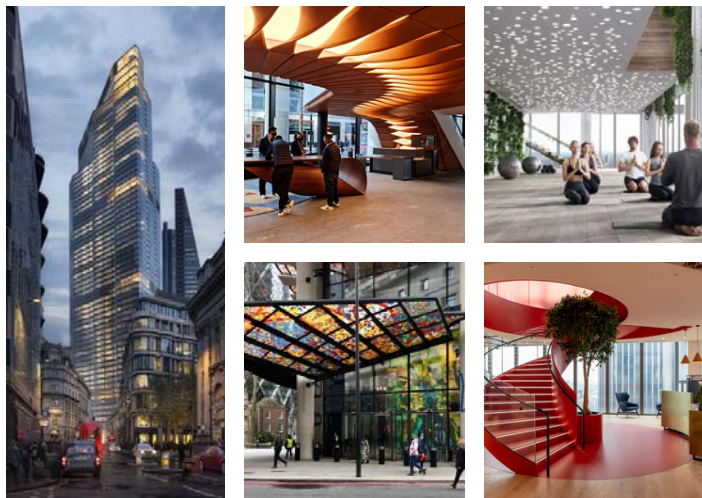
**Future Workplace Panel:** Join us for an enlightening discussion where industry experts share insights from projects at pivotal stages of development. With a focus on 'return on experience', this dynamic discussion brings together law firms at various stages of curating their workplaces.

**Workplace Tours and Drinks:** At Burgess Salmon's newly refurbished London office, attendees will have the opportunity to explore the various levels and amenities of the building. Led by knowledgeable guides, groups will delve into the intricacies of the workplace design and be able to experience it first hand. The tour will conclude offering guests the opportunity to unwind and network.



**TUESDAY 19th NOVEMBER**

## **WORKPLACE TOURS - 22 BISHOPSGATE**



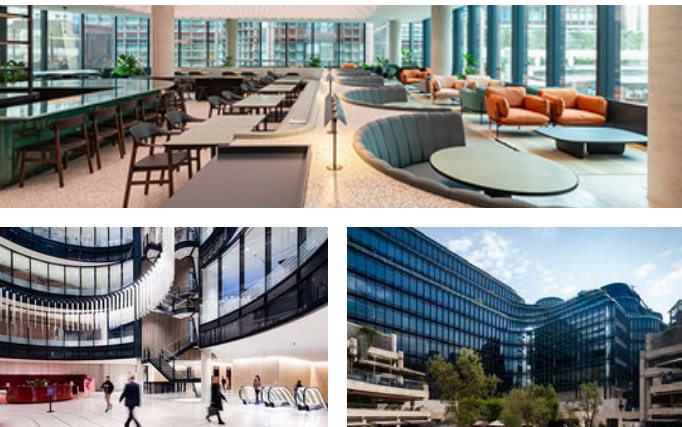
Explore one of the world's smartest workplaces and join the Smart Spaces team on a tour of 22 Bishopsgate, a people-led smart building, designed to meet the changing needs of the modern occupier and inspire a new way of working. Here, you'll experience first-hand what it takes to make a commercial real estate property of this kind truly smart-enabled.

From contactless entry using Apple Wallet mobile wallet credentials to smart bike and locker storage in the ACP. From lunch click & collect functionality in the Market, to smart visitor management. This building has it all. You'll be joined on the tour by a leading member of the Smart Spaces team who will be on-hand to answer any questions you may have. We hope to see you there!

## **WORKPLACE TOURS - 100 LIVERPOOL STREET WITH SWIFTCONNECT AND BRITISH LAND**



Visit, 100 Liverpool St, one of London's smartest buildings: see and hear how British Land is working with technology partners to transform people's experiences in its buildings, drive efficiency and utilise data to better understand how buildings are used and help deliver what their customers need. This building has been the starting point for British Land's market leading digital building innovation, so there's lots going on. Show-cased as part of the tour you'll also hear and experience how British Land is partnering with SwiftConnect and their occupiers to deliver connected access technology across their portfolio. That's not just through their own ground-floor systems. But also street-to-seat for their own employees at their HQ; for Storey, their flex workspace offer; and for a growing number of their occupiers. See how SwiftConnect's infrastructure stitches together a whole range of different systems and partners to create a single unified access experience.



## **WORKPLACE TOURS - GSK GLOBAL HQ**



GSK's new global headquarters in Central London – a place where everyone is supported to thrive and get ahead together. Join us and see first-hand this ground-breaking new space.

The HQ offers close proximity to the UK capital's fast-growing global Life Sciences hub, London's Knowledge Quarter, and GSK's existing collaboration partners including the Francis Crick Institute and King's College London. On the corner of New Oxford Street and Eamshaw Street, the headquarters' design and excellent public transport links supports the company's commitment to sustainability.





**TUESDAY 19th NOVEMBER**

## **WORKPLACE TOURS - META, KING'S CROSS**



Join us to experience Meta's metamorphosis at their new King's Cross HQ. Meta will share their innovative approach to real estate and digital integration and how their strategic approach enabled them to blend physical and digital space to create a dynamic and immersive work environment.



## **WORKPLACE TOURS - THE HINES TOUR: DEEP DIVE INTO THE GRAINHOUSE & 18 BLACKFRIARS VISION**



### **Hines**

Join us for an immersive experience at the Hines HQ, where attendees will explore Grainhouse, a state-of-the-art office building that combines rich history with cutting-edge design.

During the tour, participants will learn how this iconic property has been meticulously revitalized to provide flexible, sustainable workspaces in the heart of London. Gain insights into Hines' innovative approach to property redevelopment, including how Grainhouse integrates modern amenities with heritage architecture to create a space where productivity and creativity thrive.

Attendees will also be among the first to discover Hines' latest landmark project, 18 Blackfriars. This exclusive presentation will unveil the vision behind 18 Blackfriars—a striking mixed-use development poised to redefine the London skyline. Learn how this ambitious project balances residential, commercial, and cultural spaces in a sustainable, community-centered environment. Hines' commitment to environmental and social impact will be highlighted, offering a glimpse into the future of urban development that's as inclusive as it is iconic.

To conclude, the event will feature a drinks and networking session where guests can connect with industry professionals, share insights, and discuss new opportunities. This informal gathering will be a chance to foster meaningful relationships, exchange ideas, and engage with Hines' leadership and project teams in a relaxed setting.

TUESDAY 19th NOVEMBER

## FUTURE FINANCIAL ROUNDTABLE SPONSORED BY MODO LABS AND HOSTED BY CONVENE,

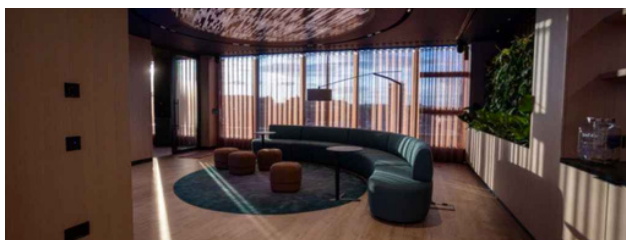
\*Please note this financial roundtable is invite only\*



**Future Workplace Panel:** Join us for an enlightening discussion where industry experts share insights from projects at pivotal stages of development. With a focus on 'return on experience', this dynamic discussion brings together financial services firms at various stages of curating their workplaces.

**Sancroft Tours:** Nestled between historic London landmarks in Paternoster Square, Convene Sancroft, St. Paul's is a one-of-a-kind venue with impressive scale. The design of the location draws inspiration from the surrounding local craftsmanship and nearby contemporary architecture. The space is flooded with natural light from the nine- to 14-foot floor-to-ceiling windows and provides a white box space allowing for client and event branding opportunities, in-house catering with customisation options.

Each attendee will receive a summary of this stimulating festival edition of WORKTECH London 2024. This report will capture the highlights from each session including the tours, showcases, talks, across London. It will be presented by our colleagues at WORKTECH Academy as part of the closing summary of the conference and available to all delegates a week after the event.





# WORKTECH LONDON: SPECIAL EDITION

This year's WORKTECH London is a Special Edition featuring two and a half days of office tours, networking opportunities, and a conference filled with sessions from leading voices, seminars, and debates for in-depth discussions. Our programme promises a diverse and stimulating experience with thought-provoking debates covering a wide range of subjects.

We start the conference with seminars and panels covering a wide range of topics, including the key challenges facing today's financial and legal workplace occupiers and how new technologies are shaping the future workplace experience.

Additionally, the conference will feature visits to new workspaces and innovative experience spaces. Attendees can also enjoy numerous networking opportunities, including the WORKTECH Drinks Reception, a VIP Dinner, and a Conference Party.

Join us as we explore the intersection of people, place, and technology at this pivotal moment for the office. Engage in the discussions, think openly, and forge new connections amidst the vibrant backdrop of London.

## HOW IT WORKS



### STEP 1

Visit our [website](#) and register for the conference by booking a ticket.



### STEP 2

Register your interest for the tours and roundtables by completing the form on our website and selecting which activities you'd like to take part in.

*\*Please note this step is not available yet.  
An email will be sent around once the form is available.*



### STEP 3

We will send you a confirmation email and diary invite from the WORKTECH Team for the activities you have successfully signed up for.

**Note that spaces for the tours and financial round table are limited and subject to availability for registered delegates**

## TOUR OPTIONS

### Monday 18th November

- Workplace Tour - Zoom Experience Centre
- Legal Roundtable and Launch Party hosted by Burges Salmon

### Tuesday 19th November

- Workplace Tour - GSK Global HQ
- Workplace Tour - 22 Bishopsgate
- Workplace Tour - EDGE, 125 Shaftesbury
- Workplace Tour - 100 Liverpool Street
- Workplace Tour - Meta, Kings Cross

# OUR VENUE



## Convene, 22 Bishopsgate, London

22 Bishopsgate is the tallest tower at the heart of the City of London's financial district. Shaped to respect townscape views, its twenty-three-sided, faceted glass form makes a strong and serene backdrop to the surrounding articulated towers and to the historic fabric of the Bank of England Conservation Area.

The building is infused with smart technologies, from the front door to the glass façade and everything in between. Opt-in facial recognition technology removes the hassle for staff entry and QR entry codes sent with visitors' meeting invitations render the reception desk queue redundant. Roving receptionists greet and assist if required.

22 Bishopsgate is designed with the individual's well-being in mind. Art and craft, higher ceilings, increased daylight control, better fresh air and amenities combine to support individuals, in traditional and new ways of working. Outside of office area, approximately 100,000 square foot is dedicated to facilities that aim to improve the everyday experience for the building's users and the public.

## GETTING HERE

### VENUE ADDRESS

22 Bishopsgate,  
London,  
EC2N 4AJ

### PUBLIC TRANSPORTATION

The nearest tube stations to 22 Bishopsgate are:  
Liverpool Street Underground – 7-minute walk  
Monument – 7-minute walk

The nearest Train stations to 22 Bishopsgate are:  
Fenchurch Street – 9-minute walk  
Liverpool Street – 9-minute walk

The nearest DLR Stations to 22 Bishopsgate are:  
Bank – 7-minute walk

Bus Stations near 22 Bishopsgate:  
Threadneedle Street (LN) -2-minute walk  
Wormwood Street (Y) – 3-minute walk  
Bishopsgate (R) – 4-minute walk  
Bishopsgate (N) – 4-minute walk  
All Hallows Church (U) – 6-minute walk

### PARKING

There is 24hr paid parking available at an NCP car park located a 17-minute walk away, also with electric car charging points available. Please note there is a max height of 1.98m.

# KEY INFORMATION

## Date & Venue

When: Monday 18th- Wednesday 20th November

Where: Convene, 22 Bishopsgate, London

## How to book:

Visit: <https://worktechevents.com/events/worktech24-london/>

## Offer a Special Rate to Your Network!

Become a marketing partner for this event and qualify for a special rate for your colleagues, complimentary passes for yourself, logo exposure for your organisation, and more!

If you are part of a group that would like to attend and are looking for a joint group rate please get in touch to arrange a bespoke ticket price.

## Become a WORKTECH Ambassador

We're looking for people that love the future of work and the workplace and social media. People who are willing to become part of our team and help spread the word to the masses. There will be a free event ticket available to successful applicants. Apply here: <https://bit.ly/3jiHC4b>

For more information on the above initiatives, please contact:

[renee.saunders@worktechevents.co.uk](mailto:renee.saunders@worktechevents.co.uk)



7 St. John's Mews

13 St. John's Road, Hampton Wick

Kingston upon Thames, KT1 4AN, UK

+44 (0)20 89 77 89 20

[info@unwired.eu.com](mailto:info@unwired.eu.com)

[www.worktechevents.com](http://www.worktechevents.com)