

WORKTECH™

Auckland

WORK / WORKPLACE / TECHNOLOGY / INNOVATION

EXPLORE THE FUTURE OF WORK AND THE WORKPLACE

VENUE: B:HIVE, SMALES FARM

TUESDAY 5TH AUGUST

09:00 - 16:45 NZDT

Hosted by

**SMALES
FARM**

Silver Sponsors

NESPRESSO
PROFESSIONAL

 **readytech**

Bronze Sponsors

aspect  **KOPLUS**

neat. **Zenith**

Bespoke Sponsors

Harrows

 **spaceworks**

Supported by

 **BNZBA**
BRITISH NEW ZEALAND BUSINESS ASSOCIATION INC.

EMA®



WORKTECH ACADEMY



Conference Producer,
WORKTECH Events

A warm welcome to WORKTECH25 Auckland

WORKTECH is the fastest growing forum for all those involved in the future of work and the workplace as well as real estate, technology and innovation.

Never before has the workplace, and the way we work been so high on the agenda for organisations. As we make the great return to the office, how can organisations build engaging workplace experiences and cultures for their people?

You are invited to join senior professionals from real estate, facilities, HR, technology, executive management, architecture, design and professional advisors to listen to global thought leaders, and share best practice and expertise.

The conference will be run in one stream, which means our delegates will get to attend every speaker presentation. We will also have a curated innovation exhibition happening in the breakout areas for attendees to meet with our education partners, complementing learning throughout the day, as well as three networking breaks, creating time for attendees to meet the other participants

We hope you will be able to join us and we are looking forward to welcoming you to the event on 5th August.

Warmest regards,
Samantha

CONTENTS



SPEAKERS



SESSIONS



CONFERENCE AGENDA



VENUE



WHO ATTENDS



KEY INFORMATION

MEET THE SPEAKERS

WORKTECH25 Auckland will attract some of the biggest and brightest names to debate, discuss, and divulge the latest thinking on the future of work and the workplace.

The conference will feature leading international thinkers from industry and academia. Our speakers represent some of the world's biggest brands and best universities and research departments, alongside radical visionaries from new innovative organisations.

Through interdisciplinary speakers and learning experience, we focus on bringing cutting edge ideas and inspiration to the workplace community to enhance creativity and move thinking forward. Instead of focusing on peer to peer innovation through imitation, we aim to curate a unique programme, bringing together experts in the fields of people, place and technology and relevant adjacencies to reflect on the future of work and workplace.

Alongside the conference series, the WORKTECH Academy knowledge hub explores the future of work through six key themes: people, place, technology, design, culture and innovation. Creating leading commentary, research and publications that places scientific research at the heart of key business problems. www.worktechacademy.com

Full list of speakers

Sonia Akselund [Air New Zealand](#)
Anshuman Banerjee [Spark New Zealand](#)
Dr Paulette Brazzale [AUT](#)
Anna Campbell [Whakarongorau Aotearoa](#)
Dr Dani Chesson [Design Thinker Institute](#)
Anya Duffy [Auckland Council](#)
Ryan Ghisi [2degrees](#)
Suzie Lewisham [Fonterra](#)
Tica Masuku [Spaceful](#)
Lucy Matheson [Grant Thornton New Zealand](#)
Brian Northern [Fulton Hogan](#)
Lauren Parsons
John Philpin [The Future Found](#)
Anita Potgieter [Visa](#)
Veleska Rough [Beca](#)
Chloe Stewart-Tyson [Beca](#)
Mike W [Readytech](#)
Hilary Walton [Microsoft](#)



Dr Paulette Brazzale, AUT



Ryan Ghisi, 2degrees



Suzie Lewisham, Fonterra



Anya Duffy, Auckland Council



Lucy Matheson, Grant Thornton



Anita Potgieter, Visa



Tica Masuku, Spaceful



Anshuman Banerjee, Spark



Chloe Stewart-Tyson, Beca

CONFERENCE AGENDA

TUESDAY 5TH AUGUST

VENUE: B:HIVE, SMALES FARM, 72 TAHAROTO ROAD

09:00 - 16:45 NZDT

08:30 | CONFERENCE OPENS

09:00 | CHAIRPERSON'S OPENING REMARKS

Anya Duffy, **Capability Innovation Lead, Auckland Council**



09:10 | STATE OF THE MARKET: AUDIENCE PULSE SURVEY

We'll start by gauging the biggest challenges faced by workplace leaders, the barriers holding back progress, and the opportunities that lie ahead, setting the stage for a day of inspired discussion.



09:15 | OPENING KEYNOTE: LEADING SO PEOPLE THRIVE – KEYS TO A MOTIVATED, HIGH-PERFORMANCE TEAM

Lauren Parsons, CSP, AS,
**Award-winning Keynote
Speaker, Author, Workplace
Wellbeing Specialist**



Feeling stretched trying to keep your team motivated without burning them—or yourself—out? In this fast-paced, practical session, Lauren Parsons will show you how to lead like a master gardener—creating the right conditions for your people to grow and flourish. You'll discover simple ways to build trust, prevent burnout, and recognise your team in ways that actually matter. Walk away with fresh tools to boost energy, lift performance, and help your team truly thrive.

09:45 | HUMANISING TRANSFORMATION IN THE FUTURE OF WORK: EMBRACING CHANGE AND BUILDING RESILIENT ORGANIZATIONS

Dr. Paulette Brazzale, **Lecturer,
Psychology of Change Expert,
Future of Work Research
Institute, AUT**



As we explore the future of work and workplace, one constant remains: change. But with rapid transformation comes rising employee fatigue. In this opening keynote, Dr. Paulette Brazzale reframes how we understand employee responses to change—beyond resistance or acceptance. She'll share practical strategies for sustaining engagement, managing diverse reactions, and creating a positive change culture. This session sets the tone for the day, offering a vital lens through which to view transformation—one that ensures change is not just implemented, but truly embraced.

10:10 | INTERACTIVE AUDIENCE DISCUSSION



10:15 | NETWORKING & COFFEE BREAK

11:00 | WORKPLACE TOPOPHILIA – THE ROLE OF PLACE IN THE DIGITAL AGE

Tica Masuku, **Director,
Workplace Strategy, Spaceful**



Biophilia has been a buzzword for years (and rightly so), but a new term has been emerging to take the spotlight: Workplace Topophilia. While topophilia sounds similar to biophilia, it represents a distinct concept: our connection to place. The way we experience places, and the way we connect to spaces, is deeply rooted in human beings. Yet in our increasingly digital world, our spatial awareness is diminishing - affecting how we perceive, navigate, and connect with our physical environments. This shifting dynamic might not only impact how people experience the workplace, but also how we experience & perform work itself - including our emotional and intellectual capabilities. In this interactive keynote session, we'll uncover how digital-physical tensions reshape our cognitive patterns and workplace behaviours, and explore strategies to enhance our spatial connection in the modern workplace.

CONFERENCE AGENDA

TUESDAY 5TH AUGUST

VENUE: B:HIVE, SMALES FARM, 72 TAHAROTO ROAD

09:00 - 16:45 NZDT

11:30 | CASE STUDY: BECA'S GLOBAL HQ AND WORKPLACE JOURNEY

Chloe Stewart-Tyson, **Group Head of Workplace Assets & Experience, Beca** / Veleska Rough, **Workplace Transformation Business Partner, Beca**



This presentation explores Beca's transformative workplace journey, outlining key findings and valuable lessons learned using our Global headquarters as a case study. From strategic planning to execution, it highlights challenges faced, solutions implemented, and insights gained that shaped success. Attendees will gain practical knowledge on creating effective strategies to bring multifunctional teams together to deliver considered workplace designs.

11:55 | EXPERT PANEL: REDEFINING WORKPLACE SUCCESS – MEASURING IMPACT

Moderator: John Philpin, **Founder, The Future Found**
Anita Potgieter, **Director Corporate Real Estate & Facilities Management, Visa** / Ryan Ghisi, **Head of People Operations, 2degrees** / Sonia Askelund, **General Manager - Employee Experience & People Operations (People Lead), Air New Zealand**

The workplace is more than just a physical space—it's an interconnected ecosystem that shapes human experience and directly influences employee engagement, well-being, and business performance. Yet, measuring success across people, culture, space, and technology remains a challenge. With competing priorities and siloed functions, how can organizations align teams to assess true impact and enhance the employee experience holistically? This panel will explore cross-functional strategies to break down barriers, leverage data, and establish meaningful metrics beyond traditional KPIs. Industry leaders will share insights, challenges, and innovative approaches to workplace and performance analytics—helping organizations redefine success and optimize employee experience, productivity, and business outcomes.



12:30 | INNOVATION PLATFORM - READYTECH

Mike W, **National Business Development Manager, NZ, ReadyTech**



12:35 | INTERACTIVE AUDIENCE DISCUSSION



12:45 | NETWORKING & COFFEE BREAK

14:00 | THE SWAT APPROACH TO BUSINESS TRANSFORMATION: HOW TO DRIVE REAL BUSINESS TRANSFORMATION IN 12 WEEKS OR LESS

Suzie Lewisham, **Director of People & Culture, Chief Operating Office, Fonterra** / Dr. Dani Chesson, **Founder & Director, Design Thinker Institute**



In this fireside chat, Dani and Suzie walk you through their journey of turning a crazy idea into a practical approach for leading business transformation at pace. Drawing inspiration from law enforcement SWAT Teams learn how, through iteration and experimentation they discovered a fit-for purpose approach that has now delivered multiple outcomes for the business. Learn how to solve macros adaptive non-linear organizational challenges that require cross-functional teaming to solve, understand how to enable teams closest to the problem to develop solutions and discover the power of combining methodologies to create a fit-for-purpose approach to meet your business's unique needs.

14:25 | GRANT THORNTON'S 9-DAY FORTNIGHT JOURNEY – INSIGHTS, CHALLENGES, AND LESSONS LEARNED

Lucy Matheson, **Chief Operating Officer, Grant Thornton New Zealand**



Eighteen months into a trial of a 9-day fortnight, Lucy will share the things that have worked, the things that didn't quite work as expected, the unanticipated benefits, and the things learned about the mindset or attitudes of different groups within the team. And with 18 months behind them, would Grant Thornton recommend it to others?? Come along and find out...

CONFERENCE AGENDA

TUESDAY 5TH AUGUST

VENUE: B:HIVE, SMALES FARM, 72 TAHAROTO ROAD

09:00 - 16:45 NZDT

14:50 | AI IN THE WORKPLACE — NAVIGATING DIGITAL DISRUPTION AND EMBRACING TRANSFORMATION

Hilary Walton, **Senior Technology Strategist, Microsoft** / Anshuman Banerjee, **Tribe & Chapter Area Lead of AI & Engineering, Spark** / Anna Campbell, **Chief Support Services Officer, Whakarongorau Aotearoa // New Zealand Telehealth** / Brian Northern, **Group Chief Information Officer, Fulton Hogan**

This panel explores the transformative role of AI in the workplace, focusing on how it's reshaping the way we work, collaborate, and lead. From enhancing productivity to redefining roles and workflows, the conversation will spotlight real-world stories, unexpected challenges, and lessons learned along the way. How are organizations cutting through the hype, finding meaningful applications, and keeping pace with AI's rapid evolution? Panellists will share where they're seeing the most impact, what they're experimenting with, and how they're staying flexible in a constantly shifting environment.



15:20 | CLOSING REMARKS & KNOWLEDGE EXCHANGE — INSIGHTS, REFLECTIONS, AND FORWARD THINKING



Anya Duffy, **Capability Innovation Lead, Auckland Council**



As the day concludes, join us to reflect on key themes, insights, and takeaways from the conference. This interactive session will distil key learnings, spark discussion, and explore how the ideas presented can drive future action. Share your thoughts, gain fresh perspectives, and leave inspired to turn insights into impact.

15:45 | CONFERENCE CLOSES

15:45 | B:HIVE+ WORKPLACE TOURS



EXCLUSIVE ON-DEMAND INTERNATIONAL CASE STUDIES | AVAILABLE POST-EVENT

THE FUTURE OF WORK: GLOBAL INNOVATIONS AND TRENDS

Philip Ross, **Futurologist, Founder and CEO, UnWork and Cordless Consultants**

SUCCESS AT SCALE: WHAT RESEARCH AND LEADING ORGANIZATIONS CAN TEACH US ABOUT BUILDING HYBRID WORK PROGRAMS THAT ACTUALLY WORK

Brian Elliott, **Leadership advisor, best-selling author, Forbes' Future of Work 50**

THE LIFE FORCE OF WATER: REINVENTING MEDIBANK'S HYBRID WORKSPACE

Duncan Harper, **Project Director, Medibank** / Heidi Smith, **Lead Partner (VIC), Gray Puksand**

FROM LANGUISHING TO FLOURISHING

David Dewane, **Chief Experience Officer, Physical Space, geniant**

DESIGNING FOR THE FUTURE OF WORK AT LE TRUC

Peter Knutson, **Chief Strategy Officer, Architecture Plus Information (A+I)**

WWW.WORKTECHEVENTS.COM/EVENTS/WORKTECH25-AUCKLAND/

WORKPLACE TOURS



B:HIVE+ | TUESDAY 5TH AUGUST

Step inside B:HIVE+, the latest evolution of the award-winning Smales Farm precinct — a thoughtfully designed workspace created for the way people want to work today, and tomorrow. Located in AIA House just opposite the original B:HIVE HQ, this light-filled, intuitively laid-out environment sets a new benchmark for flexibility, wellbeing, and community in the modern workplace.

With a central atrium drawing in natural light, purpose-built private offices, and high-spec collaborative spaces, B:HIVE+ blends functional beauty with effortless usability. From modular layouts and intuitive tech-enabled meeting rooms to sustainably designed interiors and curated member perks, every element is crafted to inspire productivity and connection.

Join us for an exclusive behind-the-scenes look at how B:HIVE+ is redefining what a high-performance, human-centred workspace looks and feels like — and how it's helping businesses of all sizes thrive in a rapidly changing world.

RSVP here: <https://www.surveymonkey.com/r/DFKMXQJ>



BECA'S HEADQUARTERS | WEDNESDAY 6TH AUGUST

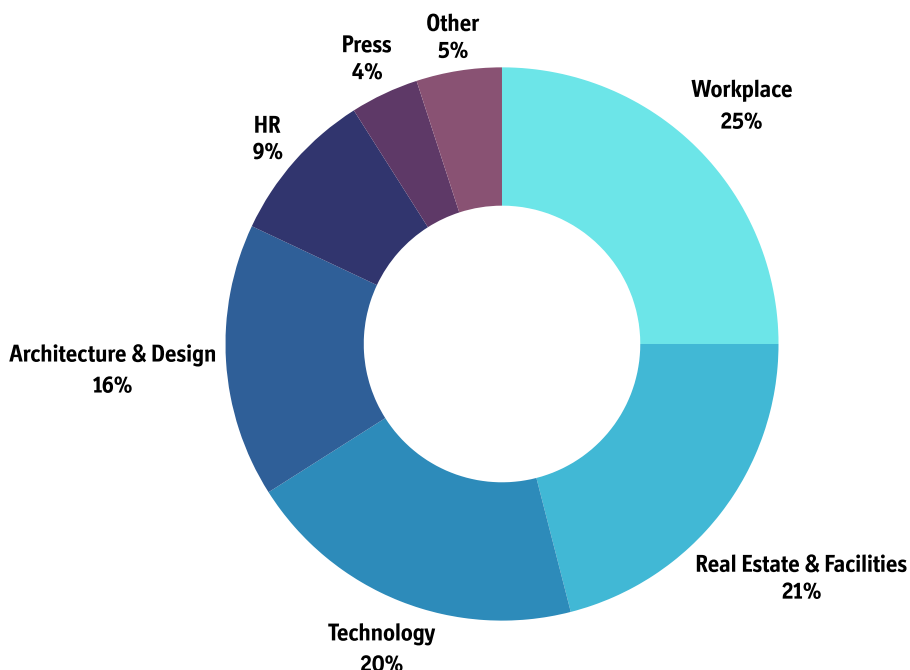
Discover Beca's new global headquarters, Te Paeroa o te Kawau—an inspiring, sustainable workspace located in Auckland's vibrant Wynyard Quarter Innovation Precinct. Spanning five floors, this 15,000 sqm office houses Beca's 1,400 Auckland-based employees and is designed to enhance wellbeing, targeting Platinum WELL Certification, 6 Green Star and 5-star NABERS NZ ratings with thoughtful, human-centered design.

Rooted in partnership with Ngāti Whātua Ōrākei, the office embraces a rich cultural narrative that honors the land's heritage and connects employees to the stories of Tāmaki Makaurau. Join us to explore how Beca's commitment to sustainability, innovation, and culture shapes a future-focused workplace that empowers creativity and collaboration in one of Auckland's most dynamic precincts.

RSVP here: <https://www.surveymonkey.com/r/DNQNT93>

WHO ATTENDS

Attracting senior level professionals from Workplace, CRE, IT, HR and Architecture & Design



A well-spoken and experienced group of presenters providing leading edge subjects current topics and statistics. A great place to learn about new ideas.

WORKTECH DELEGATE, DELOITTE



Informative, interesting views on workplace design, planning technology and workers

WORKTECH DELEGATE, BANK OF MONTREAL



PAST ATTENDEES INCLUDE



Head of Workplace Property



National Facilities Manager



Chief People Officer



Head of Property Services



Chapter Lead, People - Digital



Head of Technology and Delivery



Workplace Experience Lead



Leadership and Talent Lead



Talent Acquisition Team Leader, People and Culture



Chief Information Officer



Chief People and Culture Officer



Senior Workplace Manager

KEY INFORMATION

Date

When: Thursday, 5th August

Where: B:HIVE, Smales Farm

How to book:

Visit: www.worktechevents.com/events/worktech25-auckland/

Offer a Special Rate to Your Network!

Become a marketing partner for this event and qualify for a special rate for your colleagues, complimentary passes for yourself, logo exposure for your organisation, and more!

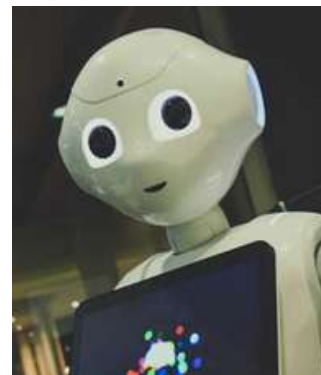
If you are part of a group that would like to attend and are looking for a joint group rate please get in touch to arrange a bespoke ticket price.

Become a WORKTECH Ambassador

We're looking for people that love the future of work and the workplace and social media. People who are willing to become part of our team and help spread the word to the masses. There will be a free event ticket available to successful applicants.

For more information on the above initiatives, please contact:

kirsty.darlington@worktechevents.co.uk



WORKTECH™

WORK / WORKPLACE / TECHNOLOGY / INNOVATION

7 St. John's Mews

13 St. John's Road, Hampton Wick

Kingston upon Thames, KT1 4AN, UK

+44 (0)20 89 77 89 20

info@unwired.eu.com

www.worktechevents.com